

100 0 100 200 300

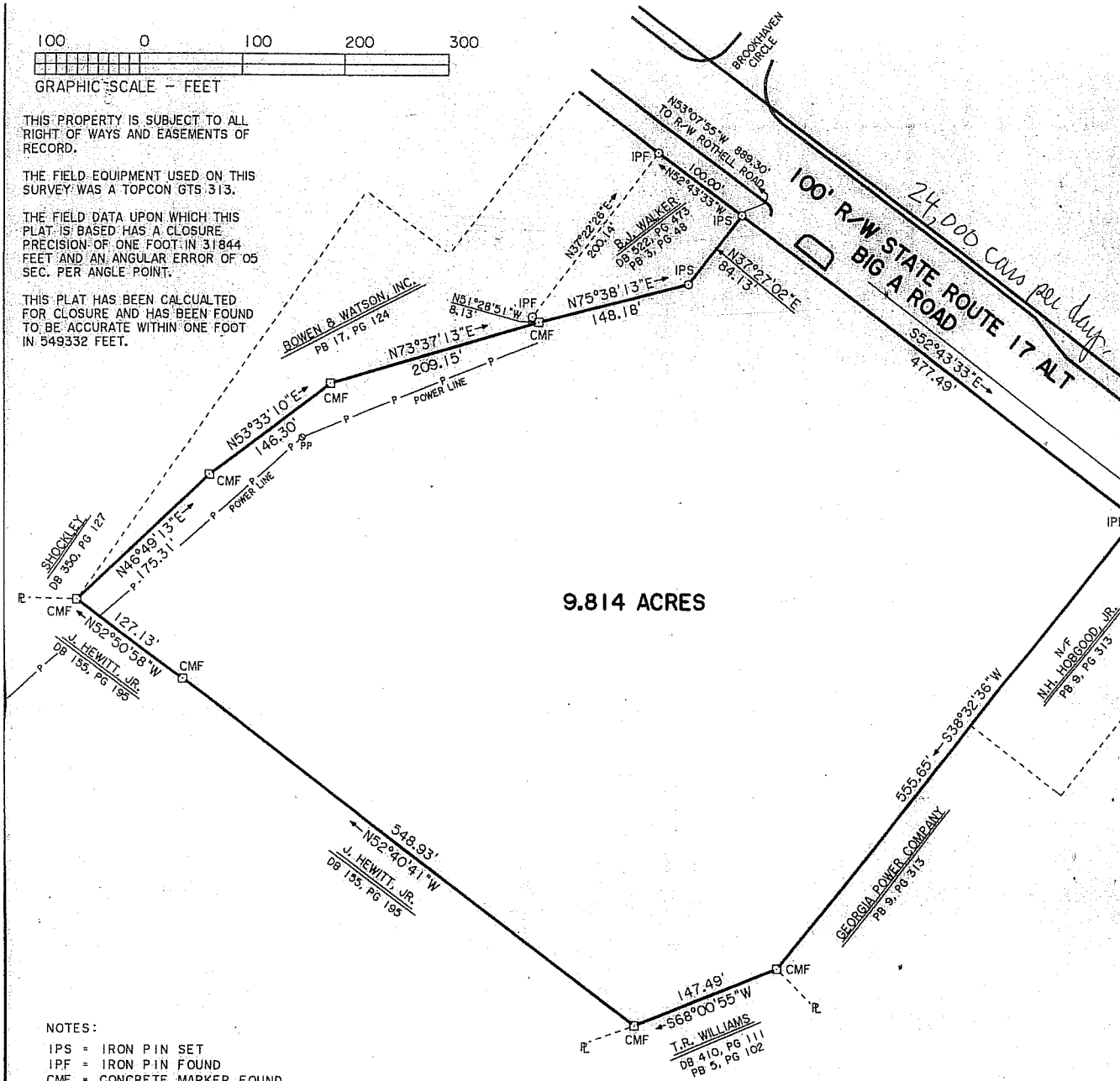
GRAPHIC SCALE - FEET

THIS PROPERTY IS SUBJECT TO ALL
RIGHT OF WAYS AND EASEMENTS OF
RECORD.

THE FIELD EQUIPMENT USED ON THIS
SURVEY WAS A TOPCON GTS 313.

THE FIELD DATA UPON WHICH THIS
PLAT IS BASED HAS A CLOSURE
PRECISION OF ONE FOOT IN 31844
FEET AND AN ANGULAR ERROR OF 05
SEC. PER ANGLE POINT.

THIS PLAT HAS BEEN CALCULATED
FOR CLOSURE AND HAS BEEN FOUND
TO BE ACCURATE WITHIN ONE FOOT
IN 549332 FEET.



NOTES:

IPS = IRON PIN SET
IPF = IRON PIN FOUND
CMF = CONCRETE MARKER FOUND
CMS = CONCRETE MARKER SET
PL = PROPERTY LINE
CL = CENTER LINE
TL = TRAVERSE LINE
R/W = RIGHT OF WAY
P = POWER POLE
P-P = POWER LINE

SURVEYED BY:
SLATE & ASSOC., INC.
G. BRIAN SLATE, RLS#2629
12610 AUGUSTA ROAD
LAVONIA, GA. 30553
(706) 356-8800

SURVEY FOR: AMERICA'S HOME PLACE		
	9.814 ACRES	REVISIONS:
	IN THE CITY OF TOCCOA	
	GMD: TOCCOA (440)	CC: CH
	COUNTY: STEPHENS, GA.	CHKD: BS
	SURVEYED: SEPT. 27, 2005	JOB NO: 3667
	SCALE: 1" = 100'	FILE NO: 14-C-254
IN MY OPINION, THIS IS A CORRECT REPRESENTATION OF THE LAND PLATTED AND HAS BEEN PREPARED IN CONFORMITY WITH THE MINIMUM STANDARDS AND REQUIREMENTS OF LAW.		 GEORGIA PROFESSIONAL L&I